

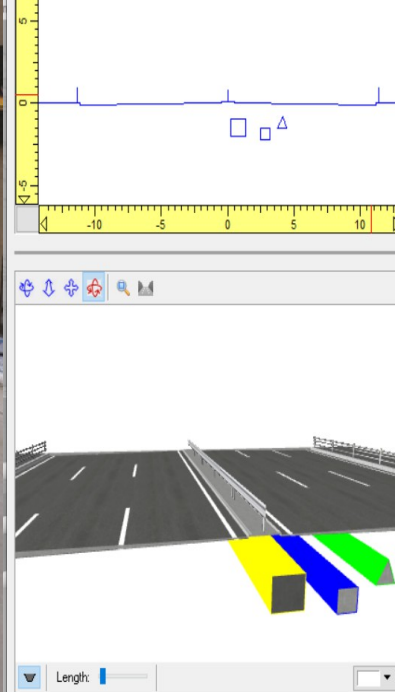
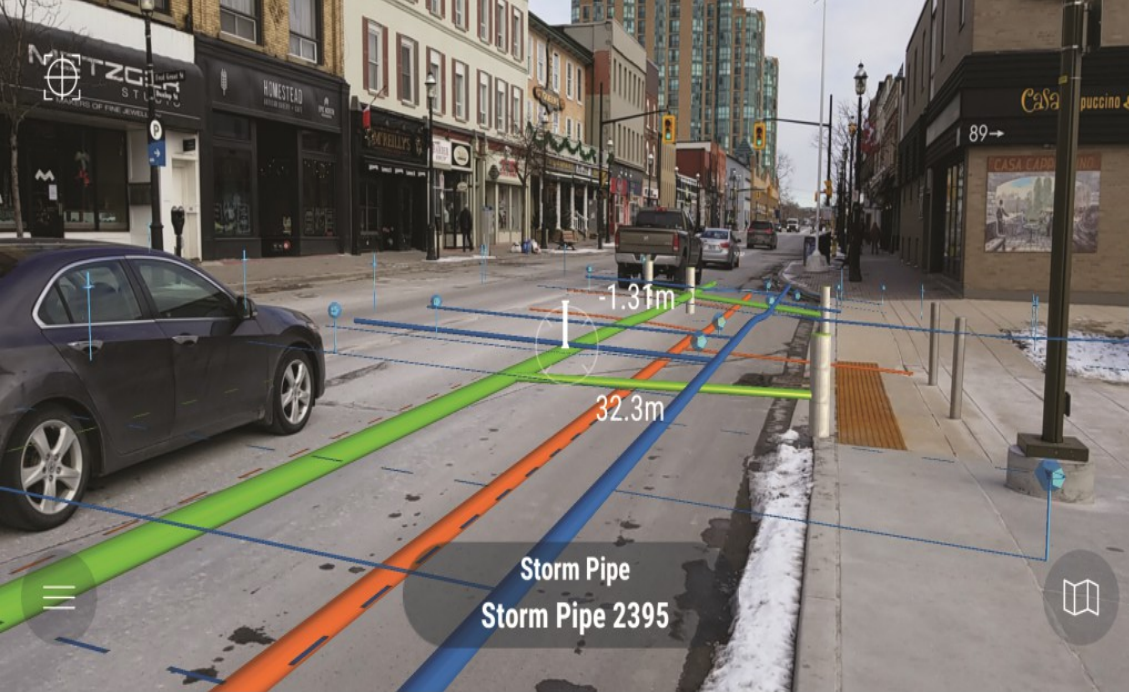


UNIVERSITA'  
DI PISA

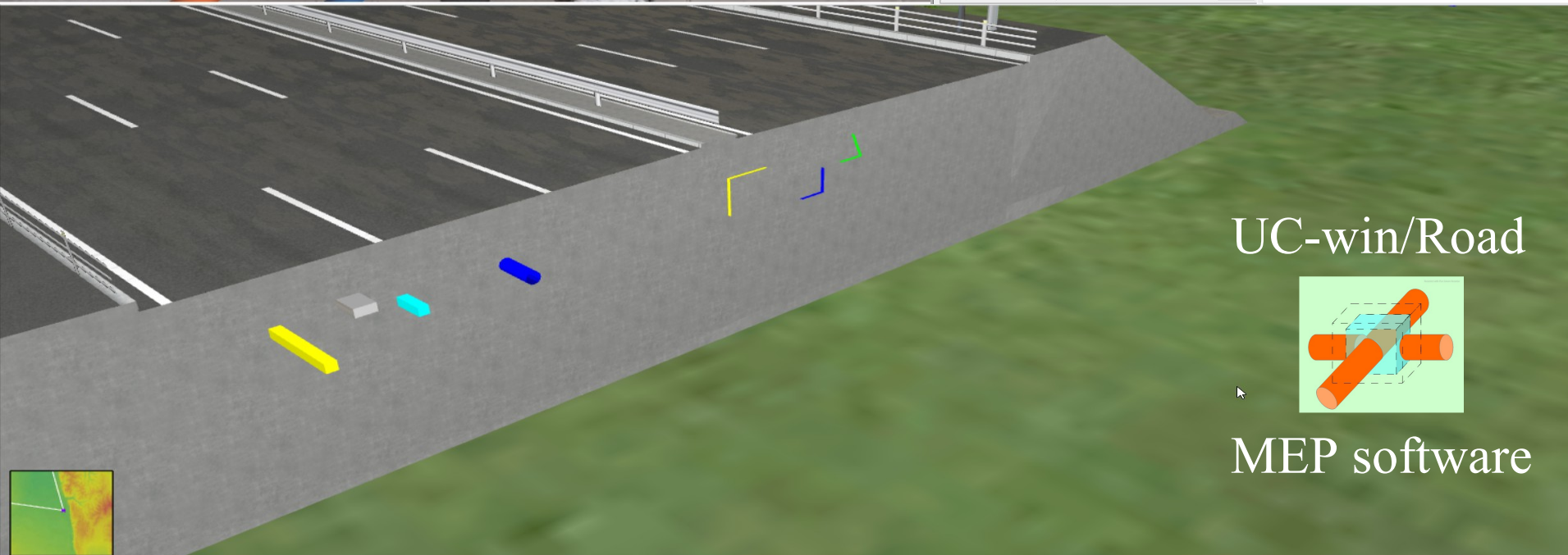
Paolo Fiamma



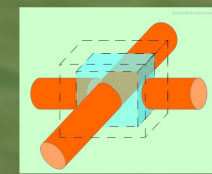
3D DEEP  MODELING



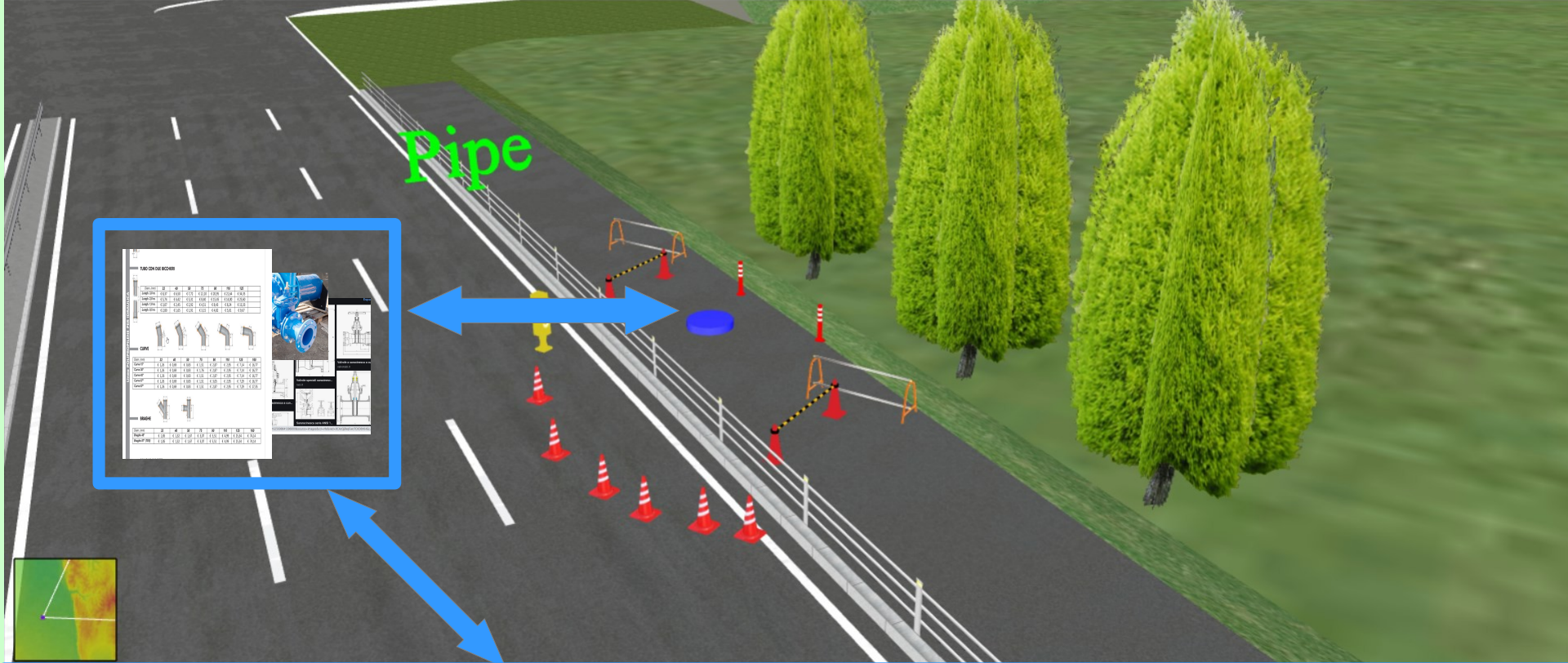
X1	Y1	Designation	Slope	X2	Y2
-14.9989	0.0500	Sidewalk	Horizontal	-11.3489	0.0500
-11.3489	0.0500	Guardrail	Vertical	-11.3489	0.9000
-11.3489	0.9000	Guardrail	Vertical	-11.3489	0.0500
-11.3489	0.0500	Curbstone	Horizontal	-11.1489	0.0500
-11.1489	0.0500	Curbstone	Vertical	-11.1489	-0.1500
-11.1489	-0.1500	Other	Horizontal	-10.8489	-0.1500
-10.8489	-0.1500	Carriageway	1.4924 %	-8.8000	0.0000
-8.8000	0.0000	Other	Horizontal	-5.5000	0.0000
-5.5000	0.0000	Curbstone	Vertical	-5.5000	0.1000
-5.5000	0.1000	Curbstone	Horizontal	-4.4000	0.1000
-4.4000	0.1000	Other	Horizontal	0.0000	0.1000
0.0000	0.1000	Guardrail	Vertical	0.0000	0.8000
0.0000	0.8000	Guardrail	Vertical	0.0000	0.1000
0.0000	0.1000	Other	Horizontal	0.4000	0.1000
0.4000	0.1000	Curbstone	Horizontal	0.5000	0.1000
0.5000	0.1000	Curbstone	Vertical	0.5000	0.0000
0.5000	0.0000	Other	Horizontal	0.8000	0.0000
0.8000	0.0000	Carriageway	-1.4924 %	10.8508	-0.1500
10.8508	-0.1500	Other	Horizontal	11.1508	-0.1500
11.1508	-0.1500	Curbstone	Vertical	11.1508	0.0500
11.1508	0.0500	Curbstone	Horizontal	11.3508	0.0500
11.3508	0.0500	Guardrail	Vertical	11.3508	0.9000
11.3508	0.9000	Guardrail	Vertical	11.3508	0.0500



UC-win/Road



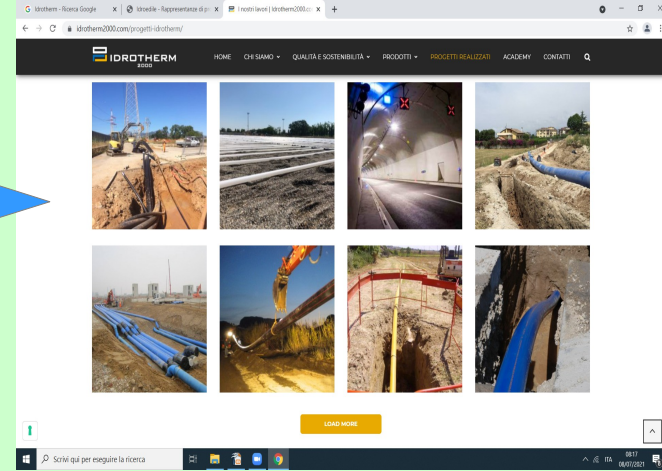
MEP software



there are big actors Industries Municipalities Enterprises ...



3D  
Industries



Immagini correlate

Valvole a saracinesca a cor...  
valvotubi.it

Valvole a saracinesca a cu...  
valvotubi.it

	D (mm)	PA
■ Curva a 90° a grande raggio	Du 20 a 160	16
■ Curva a 90°	Du 12 a 315	10-16
■ Tl a 45°	Du 20 a 160	4-16
■ Gomito a 45°	Du 12 a 315	4-10-16
■ Croce a 90°	Du 25 a 63	16
■ Tl a 90°	Du 12 a 315	10-16
■ Tl a 90° ridotto	Du 25x20 a 315x250	4-16

TUBO CON DUE BICCHIERI

	32	40	50	75	90	110	125	150
Open (mm)	32	40	50	75	90	110	125	150
Length 2.0m	€ 3,37	€ 4,62	€ 3,72	€ 12,23	€ 20,95	€ 21,64	€ 34,35	
Length 2.5m	€ 3,74	€ 4,62	€ 3,31	€ 8,40	€ 15,45	€ 16,00	€ 25,60	
Length 3.0m	€ 3,07	€ 2,87	€ 2,52	€ 4,51	€ 8,48	€ 8,24	€ 13,03	
Length 3.5m	€ 2,20	€ 1,68	€ 1,25	€ 2,12	€ 4,10	€ 3,51	€ 5,67	

CURVE

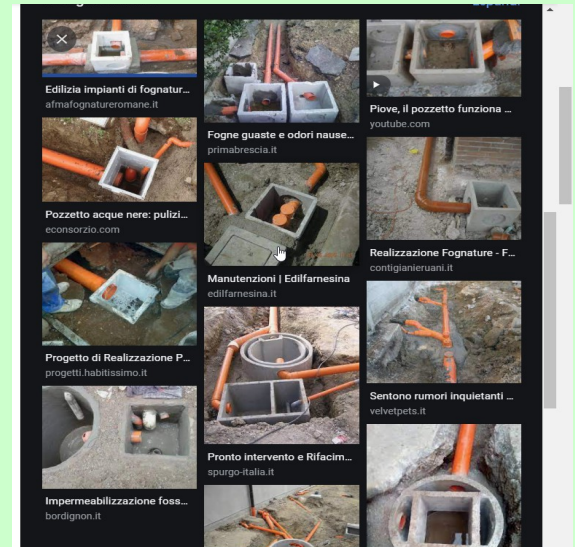
	32	40	50	75	90	110	125	150
Open (mm)	32	40	50	75	90	110	125	150
Curve 90°	€ 1,26	€ 0,69	€ 0,63	€ 1,15	€ 2,87	€ 3,35	€ 7,34	€ 10,77
Curve 45°	€ 1,26	€ 0,69	€ 0,63	€ 1,16	€ 2,87	€ 3,35	€ 7,34	€ 10,77
Curve 60°	€ 1,26	€ 0,69	€ 0,63	€ 1,15	€ 2,87	€ 3,35	€ 7,34	€ 10,77
Curve 60°	€ 1,26	€ 0,69	€ 0,63	€ 1,15	€ 3,05	€ 3,35	€ 7,32	€ 10,77
Curve 60°	€ 1,26	€ 0,69	€ 0,63	€ 1,15	€ 2,87	€ 3,35	€ 7,32	€ 10,35

BORGHE

	32	40	50	75	90	110	125	150
Open (mm)	32	40	50	75	90	110	125	150
Borghe 45°	€ 1,18	€ 1,12	€ 1,07	€ 1,07	€ 1,07	€ 1,07	€ 1,07	€ 1,07
Borghe 90°/170°	€ 1,18	€ 1,12	€ 1,07	€ 1,07	€ 1,07	€ 1,07	€ 1,07	€ 1,07



As in the reality in the intersection we can have this "box"



ありがとうございました

